

AE-C Series Motorised Zone Valve

Internally threaded valves for on/off control

Specifications

Operating Voltage:	220~240VAC 50/60 Hz
Rated Power:	5W
Motor:	magnetic hysteresis synchronous motor 5RPM
Nominal Pressure:	1.6Mpa
Applied Media:	chilled water, hot water, low-pressure steam
Stroke Range:	3mm~5mm
Full stroke time "on" :	approx. 10s (electrically)
Full stroke time "off" :	approx. 5s (by spring)
Suitable Media Temperature:	1~95 Centigrade
Control Signal:	On/off, 2 position, spring return
Valve Body:	Forged brass



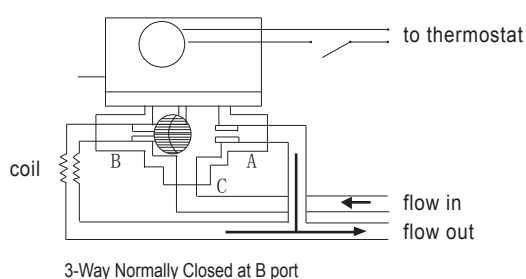
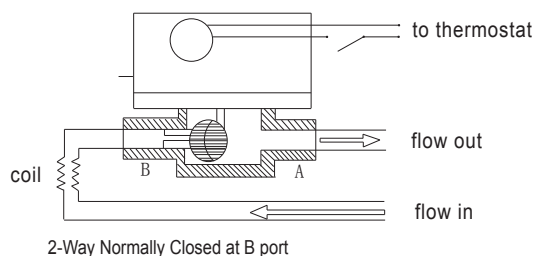
Design Features

Low noise with stable actuator force.
 The valves are supplied complete with actuator that can easily be installed.
 The housing and the cover are made of metal.
 A flap made of special rubber is used as the element to provide absolutely tight shut-off. Two O-rings are used to seal the spindle.
 The motor opens the valve electrically and closes it by means of springs.
 Faulty actuators can be replaced without removing the valve from the pipe work.
 Auto/manual lever which allows manual operation at power failure.

Models and Technical Data

Model	Size		Supply	Capacity rating		Max. close off pressure
	inches	mm	a.c. (±10%)	Cv	Kv	MPa
AE-C7315	1/2"	15	220V	2.5	2.2	0.20
AE-C7320	3/4"	20	220V	3.5	3.0	0.18
AE-C7325	1"	25	220V	8.0	6.9	0.15
AE-C3315	1/2"	15	220V	2.5	2.2	0.20
AE-C3320	3/4"	20	220V	3.5	3.0	0.18
AE-C3325	1"	25	220V	8.0	6.9	0.15

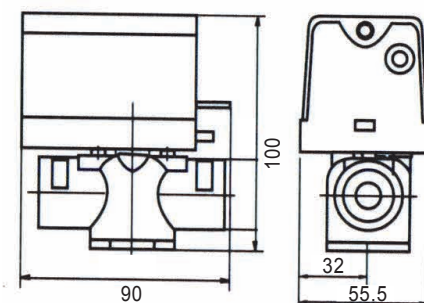
Installation



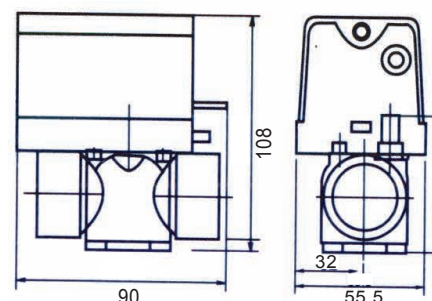
(Recommended thermostat: AE-Y307 Series; AE-Y308 Series.....for details, pls contact supplier.)

Dimensions(mm)

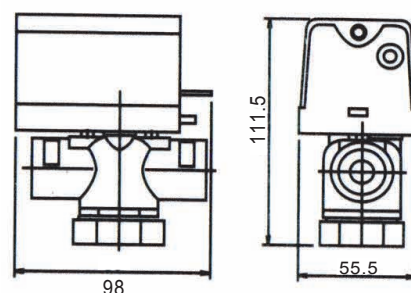
AE-C7315
AE-C7320



AE-C7325



AE-C3315
AE-C3320



AE-C3325

